



Exterior Covers

SAFE. SEAMLESS. STUNNING.

HIDE®



SKIMMER LIDS



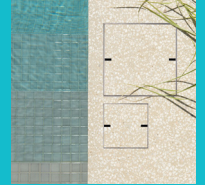
ACCESS COVERS



DRAIN COVERS



LINEAR DRAIN COVERS



CONCRETE COVERS



316 STAINLESS STEEL KITS

Appreciate the aesthetics and functionality of HIDE Covers, an essential upgrade for any outdoor environment.

MADE IN AUSTRALIA

Skimmer Lids and Access Covers

The stainless steel components ensure robust protection for your chosen inlay, enhancing the service covers longevity and durability.

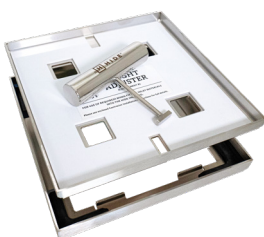


STONE | TILE | PAVER | DECKING | CONCRETE

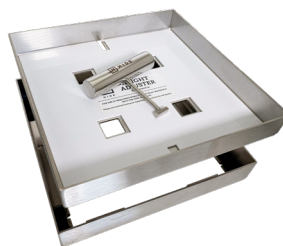
Available in a range of sizes and depths to suit popular inlay thicknesses from 8mm to 60mm. Concrete infill is available in models that are 40mm in depth.



Access Cover 156mm



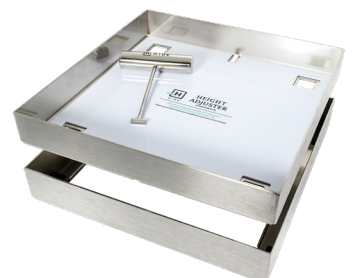
Access Cover 206mm (Also available in Polymer)



Access Cover 256mm



Access Cover 306mm (Concrete model shown)



Skimmer Lid 342 & 412mm (342mm available in Polymer)



The finish only HIDE will provide



Without HIDE

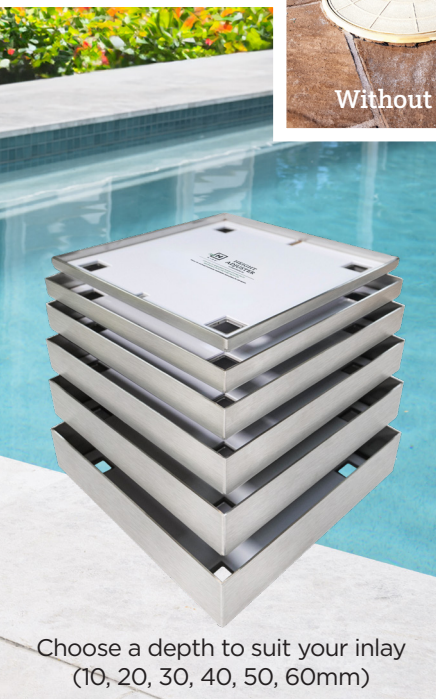
It's all in the hidden detail

HIDE® Covers take outdoor aesthetics to the next level by disguising necessary service points throughout the exterior of your home. Allowing these access covers to blend harmoniously with the surrounding landscape, creating a luxurious, uninterrupted outdoor space that meets modern design requirements.

Crafted from high-grade 316 Stainless Steel, the HIDE Lid and Edge Protector components support and protect your chosen inlay, and comes with a 20-year stainless steel warranty.

With safety in mind, HIDE lids are opened with a unique safety key, preventing unwanted access. This feature ensures secure entry and complies with Australian pool regulations, offering you peace of mind.

The range of HIDE Lids goes beyond mere functionality, offering a sought-after seamless alternative for various landscape applications.



Choose a depth to suit your inlay
(10, 20, 30, 40, 50, 60mm)



Access Cover
550x342mm



Access Cover
611x411mm



Access Covers (Manhole size)
506mm and 656mm

Polymer Skimmer Lids and Access Covers

Stainless + Polymer Range

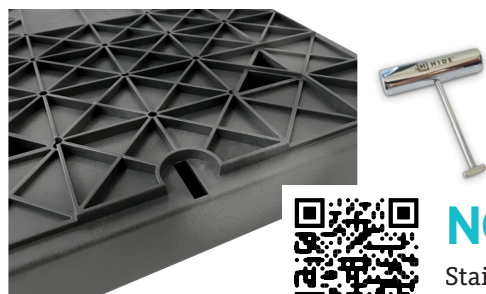
Combination Kits are the best solution when installation restrictions prevent earthing the stainless steel Edge Protector. HIDE has skillfully combined its stainless steel lid with its polymer Edge Protector, creating a unique hybrid Skimmer Lid range. With three colours available, this innovative design ensures seamless integration with your outdoor space and eliminates any need to earth the skimmer lid.

Full Polymer Range

Full Polymer Kits are a complete polymer solution perfect for installations where earthing is impractical. With the same commitment to safety and design, the Full Polymer range allows for an elegant, uninterrupted landscape without compromising functionality or safety.

Key Features:

1. No earthing required
2. Simple inlay fabrication with full stone coverage
3. Discrete key access with no moving parts
4. HIDE's proven key-way safety access
5. Inconspicuous locking system
6. Maintenance-free robust design
7. Ash, Bone & Charcoal colour options to match tiles
8. Depths to suit 20mm & 30mm tiles
9. 40mm combination kits for concrete or pavers
10. Warranty: 20-year stainless / 5-year Polymer
11. Conforms to pool safety standards

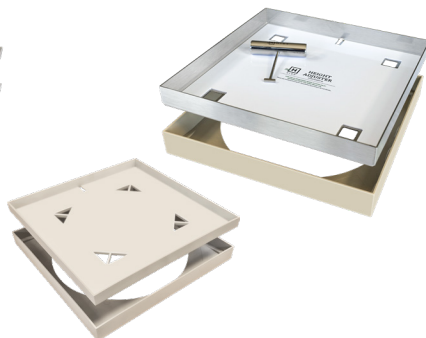


NO EARTHING REQUIRED

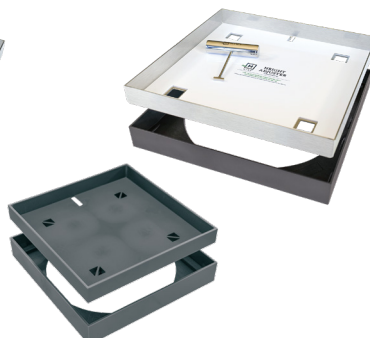
Stainless + Polymer Combination and Full Polymer Kits shown.
342mm Skimmers Lids & 206mm Access Covers available.



306 & 342mm (Ash)
(also available in 206mm)



306 & 342mm (Bone)
(also available in 206mm)

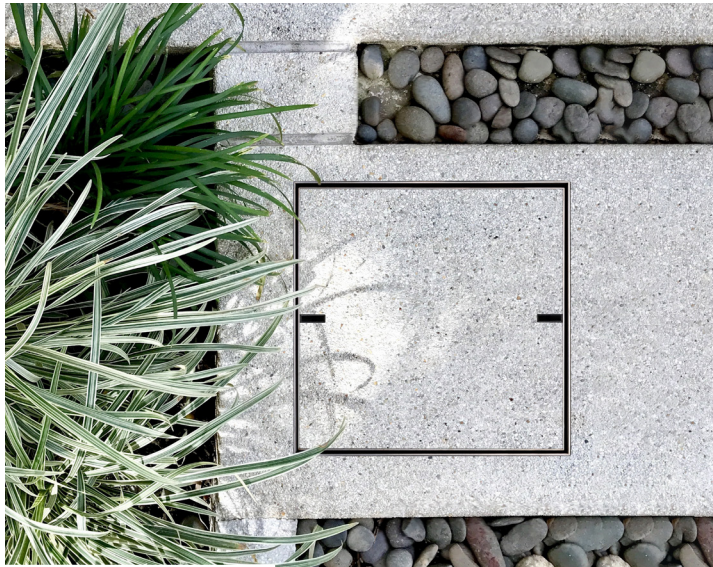


306 & 342mm (Charcoal)
(also available in 206mm)



206, 306 & 342mm
Ash Concrete

Drain Cover Range



External drain covers that improve the aesthetics of your landscape.

Experience the transformation in your outdoor space with the elegant and discreet design of the HIDE Drain Cover range.

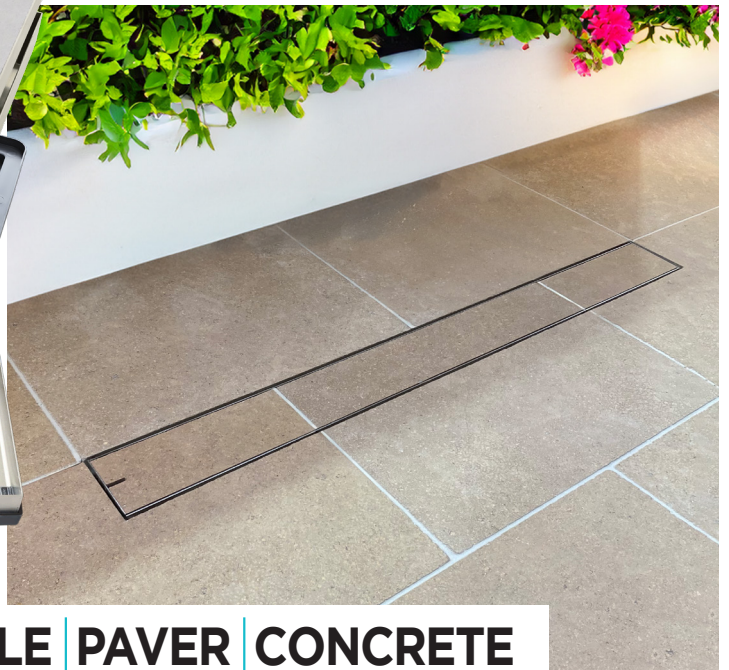
They are designed for easy removal and facilitate swift inspection for maintenance while blending flawlessly with your pool and patio surrounds.

HIDE Drain Covers are available in square and linear formats, suitable for most external surface water drainage in pedestrian areas.

Available in tile inlay or concrete wet-pour models, the HIDE Drain Cover is the perfect complement to the aesthetic demands of modern design.



Black pits are shown for illustration only



STONE | TILE | PAVER | CONCRETE

Available in a range of sizes and depths to suit your inlay thickness. Strip drains are compatible with 2 popular plastic channels.



Modular Strip Drain Cover 1210mm
(Channel not included)



Patio Drains
214, 314mm &
342mm



656mm high flow drain



Concrete Infill Drain Cover 1000mm
(Channel not included)

AUSTRALIAN OWNED AND MADE

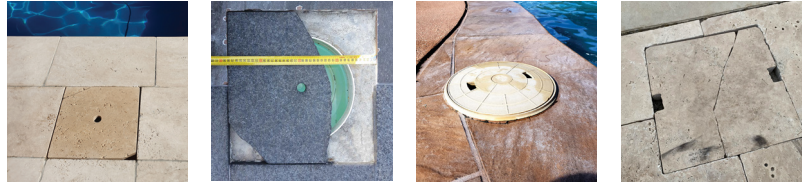
POOL SKIMMER BOX LIDS

LANDSCAPE ACCESS COVERS

EXTERNAL DRAIN COVERS

Not all Skimmer Lids were created equal.

Traditional skimmer lid options have plenty of quality and safety concerns and may not meet pool safety regulations!



Optimal Protection with HIDE Covers

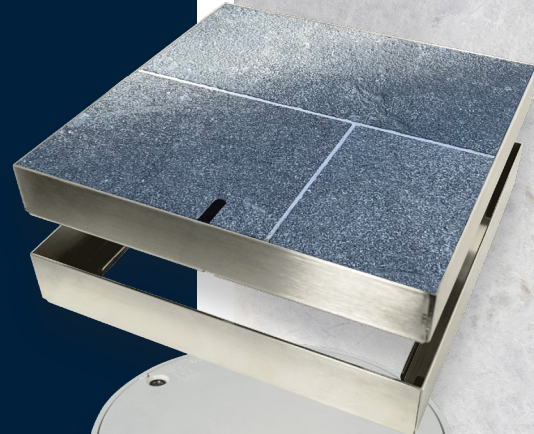
HIDE Covers offer superior protection for your inlay by encasing it in 2mm stainless steel on all sides. This robust design ensures exceptional strength and safeguards against everyday wear and tear. The lid fits perfectly flush, preventing any unwanted access.

Available in various sizes, HIDE Access Covers can cover most external service points, with depths available to accommodate your chosen inlay material. For situations where earthing is not possible, you can opt for a HIDE Skimmer Lid from our Polymer range to meet this need.

HIDE Covers are the ideal solution for concealing service points in outdoor areas, providing both protection and security, as they cannot be lifted without the safety key.

- Pool Skimmer Boxes
- IO & Bolted Trap Screw (BTS)
- Water table pipe
- Water and balance tanks
- Taps and irrigation
- Valves and meters
- Electrical junction box
- Termite bait stations
- Sporting poll mounts and brackets

Consider integrating HIDE Covers from the outset when embarking on your new landscape design. They are suited for pedestrian traffic only.



Scan & Discover



Polymer Skimmer



Linear Drain



On-site Install



Scan for care and maintenance instructions



Discover the range



Resource Index



SKIMMER LIDS PTY LTD

26 Link Drive, Yatala, Qld, 4207

P: +61 7 3807 2551

E: admin@skimmerlids.com.au

W: www.skimmerlids.com.au

