



 HIDE®

Exterior Covers

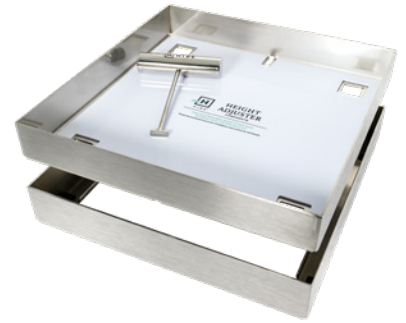
ABOUT HIDE

HIDE Skimmer Lids Pty Ltd, an Australian company with a global reputation, manufactures a range of premium-grade, internationally awarded 316 stainless steel exterior covers.

These covers provide concealed access to essential service points in commercial and urban development projects, making them a trusted choice for architects and property developers seeking to meet homeowners' expectations for flawless design.

Manufactured in Australia and shipped worldwide, HIDE Covers meet the growing demand for innovative, aesthetically integrated solutions in urban planning.





SKIMMER LIDS

HIDE Skimmer Lids offer a cutting-edge solution for discerning builders and architects looking to elevate both the aesthetic appeal and functionality of pool designs. Once installed, HIDE Covers deliver a flush, slip-resistant surface, ensuring user safety and complementing the overall design.

The HIDE system enhances ventilation by promoting airflow around the lid's perimeter—critical for maintaining skimmer pump efficiency and minimizing the risk of blockages. With its perfectly flush integration, the lid eliminates trip hazards and blends seamlessly into the pool's surface.

Available in six depth options to accommodate various inlay material thicknesses, the 342mm cover is compatible with all skimmer boxes in Australia. Internationally recognised, HIDE Skimmer Lids received the Best New Pool Building Product award in 2019.

Available sizes:

306mm or 342mm square

Tile, Stone, Paver, Decking inlay or Concrete infill.

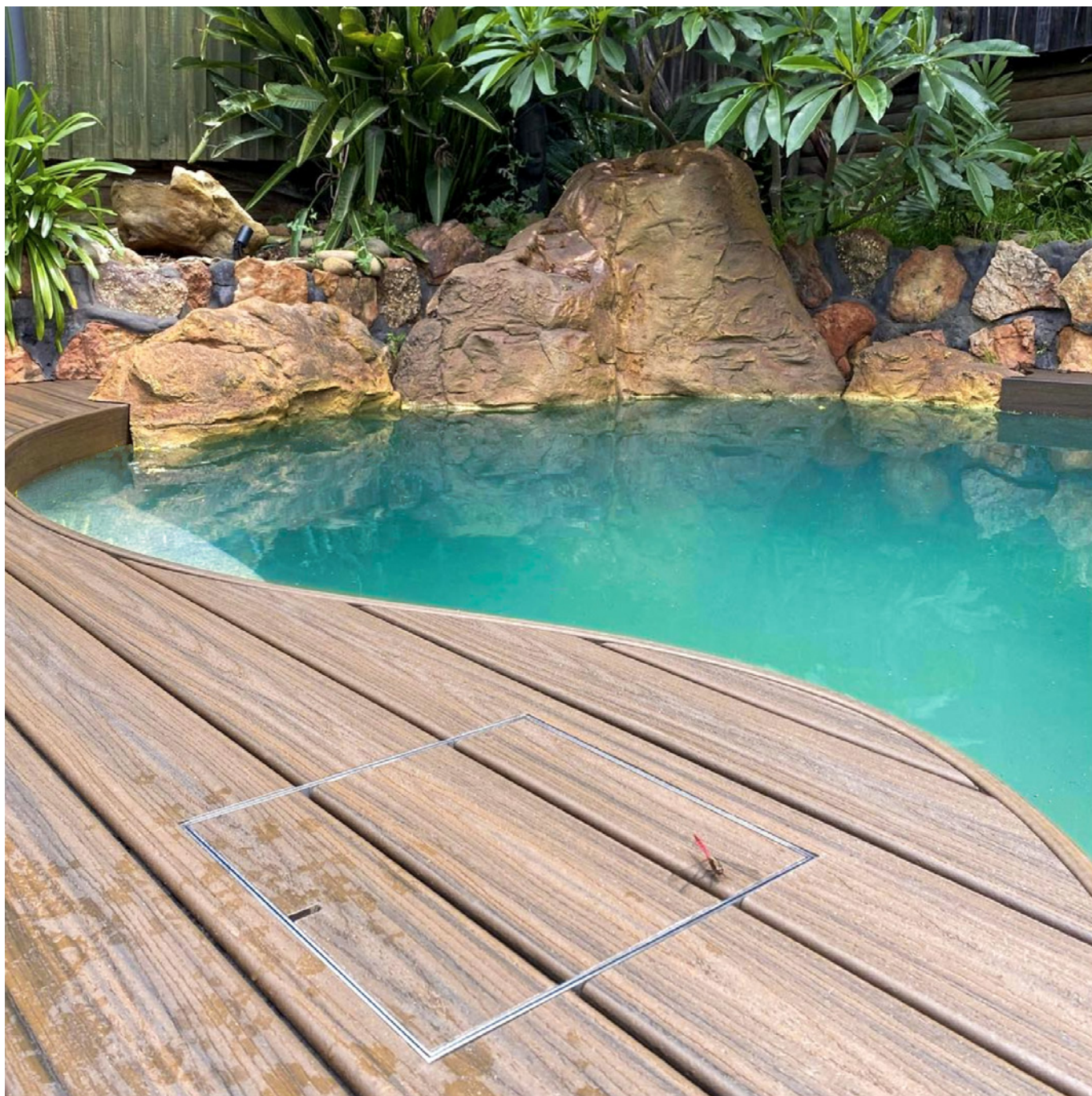




P4 - SKIMMER LIDS

@BAI HAI BY PPAA





P6 - SKIMMER LIDS

@FAIRLIE_GOOD_CONSTRUCTIONS



SKIMMER LIDS - P7

ACCESS COVERS

HIDE Access Covers provide an elegant solution for concealing service points in outdoor areas while ensuring both security and protection. With a discreet design, they can only be lifted using a safety key, offering peace of mind for property owners.

Applications include:

- Pool skimmer boxes
- Inspection openings (IO) & bolted trap screws (BTS)
- Water table pipes and balance tanks
- Taps, valves, meters and irrigation systems
- Electrical junction boxes
- Termite bait stations
- Removable fixture mounts and brackets

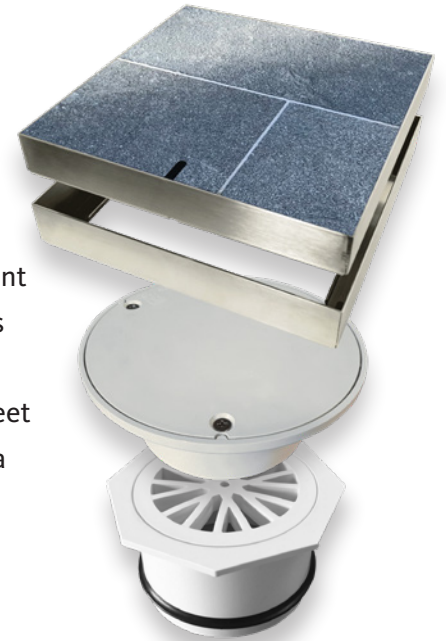
Integrating HIDE Covers from the initial stages of your landscape design ensures a seamless, functional finish. These covers are designed for pedestrian traffic only.

Available sizes:

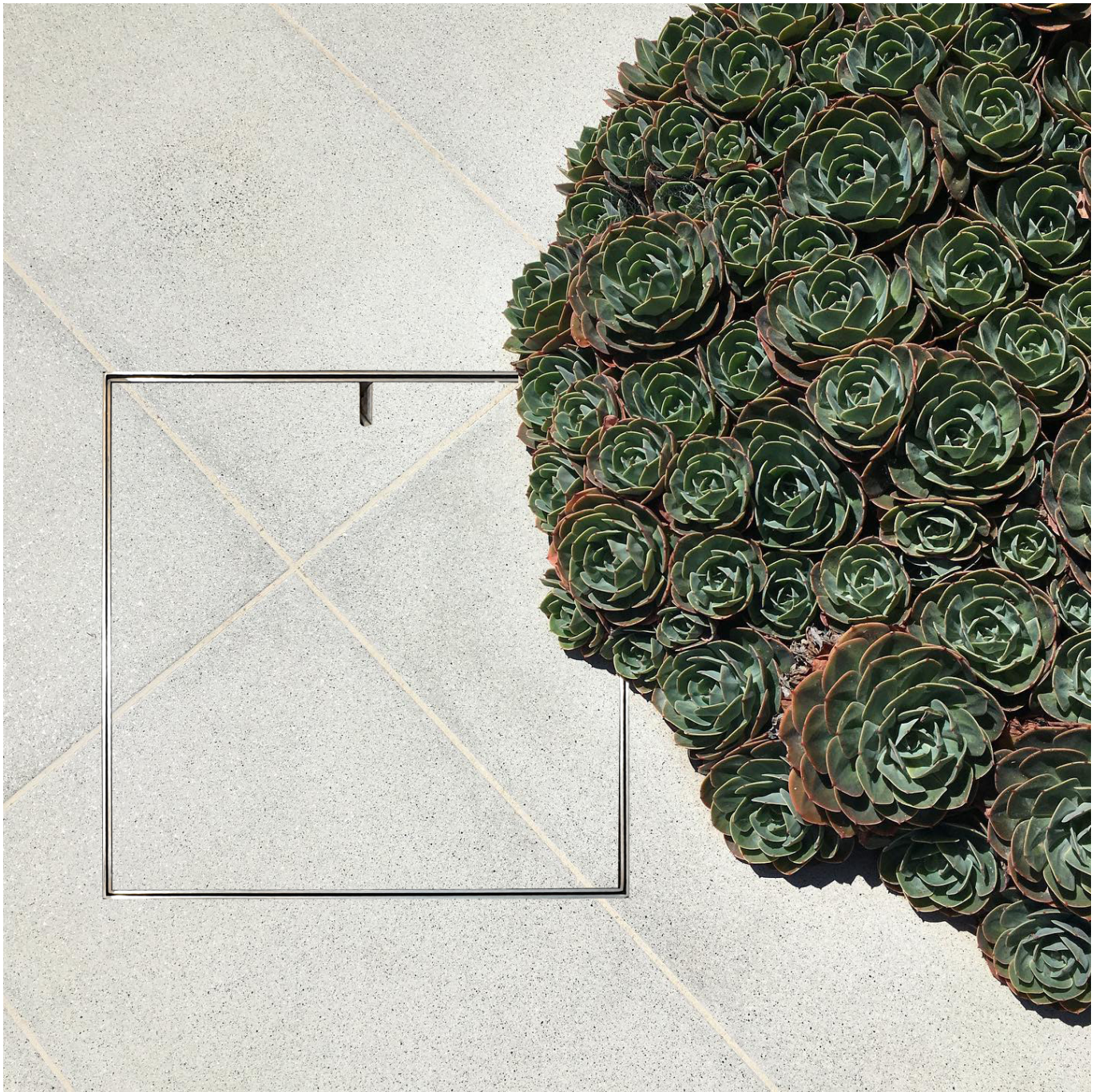
156, 206, 256, 306, 314, 342, 506 and 656mm square.

Suitable for tile, stone, paver, decking inlay and concrete infill.

(506 and 656mm covers are not suited to concrete).







P10 - ACCESS COVERS





P12 - ACCESS COVERS



DRAIN COVERS



HIDE Drain Covers are the perfect solution for removing surface water in patios and alfresco areas while maintaining a clean, blemish-free aesthetic.

With their elegant and discreet design, HIDE Drain Covers allow you to focus on the more attractive elements of your outdoor space by seamlessly concealing unsightly drain grates. Designed for easy removal, they also facilitate quick inspections and maintenance, blending flawlessly into the surrounding environment.

Available in both square and linear formats, HIDE Drain Covers are ideal for most external surface water drainage applications and can be paired with Everhard Pits and Linear Channel.

With options for tile inlay or concrete wet-pour, these covers meet the highest aesthetic standards, ensuring a flawless and integrated finish.

Available sizes:

314mm and 342mm square – Tile, Stone, Paver, Decking inlay or Concrete infill

656mm square – Tile, Stone, Paver and Decking inlay

1210mm linear – Tile, Stone and Paver

1000mm linear – Concrete Infill





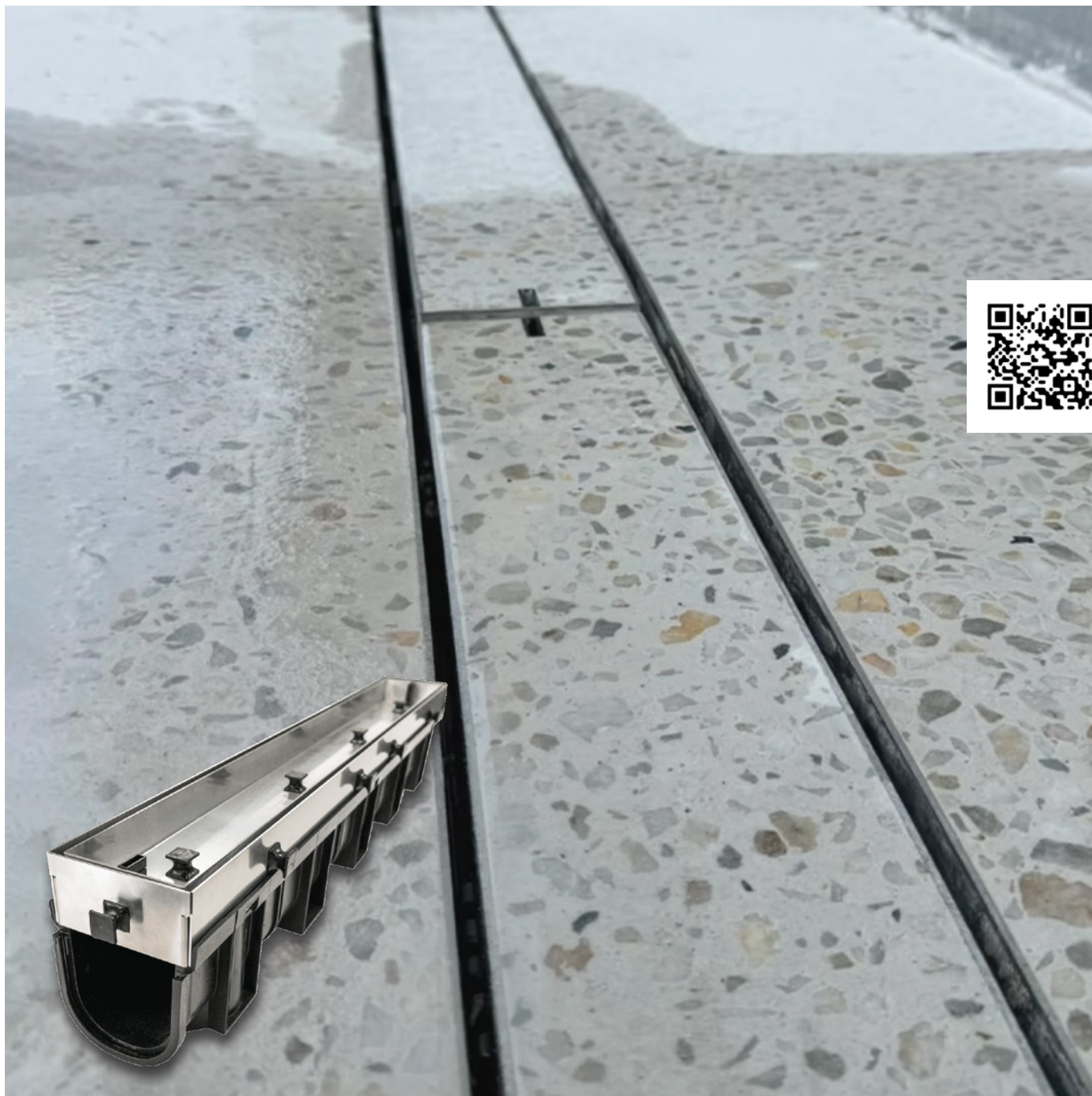
P16 - DRAIN COVERS





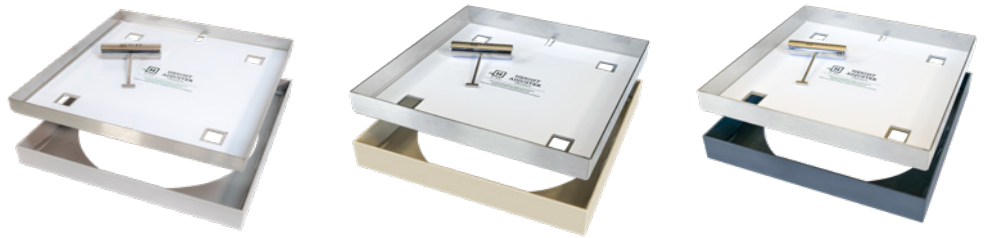
P18 - DRAIN COVERS

TILE INLAY LINEAR



CONCRETE INFILL LINEAR

DRAIN COVERS - P19



BOND FREE



COMBINATION POLYMER COVERS

Stainless + Polymer Range

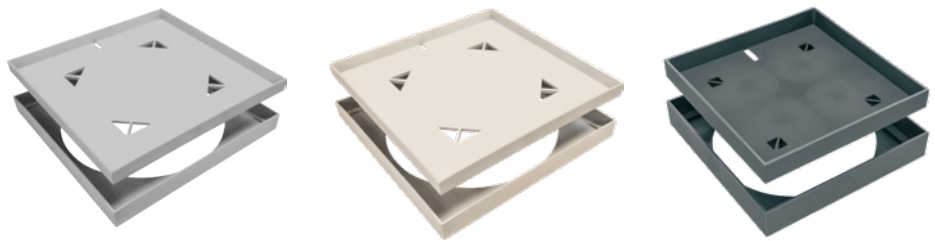
Combination Kits are the best solution when installation restrictions prevent earthing the stainless steel Edge Protector. HIDE has skillfully combined its stainless steel lid with its polymer Edge Protector, creating a unique hybrid Skimmer Lid range. With three colours available, this innovative design ensures seamless integration with your outdoor space and eliminates any need to earth the skimmer lid.

Available sizes and options:

342mm Tile Inlay - Ash, Bone and Charcoal
(also available in 206mm)

342mm Concrete Infill - Ash
(also available in 206mm)





BOND FREE

FULL POLYMER COVERS

Full Polymer Range

Full Polymer Kits are a complete polymer solution perfect for installations where earthing is impractical. With the same commitment to safety and design, the Full Polymer range allows for an elegant, uninterrupted landscape without compromising functionality or safety.

Available sizes and options:

342mm Tile Inlay - Ash, Bone and Charcoal
(also available in 206mm)



POLYMER NON-CONDUCTIVE COVERS - P23



P24 - SKIMMER LIDS

@JIMSMITHPHOTOGRAPHY

Concrete Wet-Pour available

No Earthing (Bond-Free)

Ash / Bone / Charcoal

Ash / Bone / Charcoal

Ash (Concrete or Paver)

Ash / Bone / Charcoal

Ash / Bone / Charcoal

Material		Brushed Stainless Steel (SS) 316 Marine Grade							Stainless Steel / Polymer			Full Polymer	
Application	Size mm square	Inlay Depths mm											
		10	15	20	30	40	50	60	20	30	40	20	30
Skimmer	306	●		●	●	●	●	●					
	342	●	●	●	●	●	●	●	●	●	●	●	●
Access	156	●		●	●	●	●	●					
	206	●		●	●	●	●	●	●	●	●	●	●
	256	●		●	●	●	●	●					
	506			●	●								
	656			●	●								
Drain	314	●		●	●	●							
	342	●		●	●	●			●	●	●		
	656			●									
¹ Concrete Collar	240ø					●							
	270ø					●							
² Linear Drain Covers L x W													
Linear Cover ED	1000 x 125					●							
Linear Cover ED	1210 x 125	●		●	●	●							
Linear Cover SM	1210 x 110	●		●	●								

¹**Concrete Collar** - 240mmø and 270mmø easy form collar fits into standard Skimmer Boxes.

²**Linear Drain Covers** (Drain channel not supplied)

ED - Everhard Channel - 125mm wide

SM - Reln Storm Drain and Storm Mate Channels - 110mm wide

Product Range

SKIMMERLIDS.COM.AU
+61 7 3807 2551

