



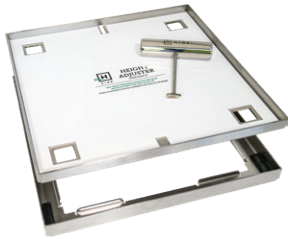
Exterior Covers



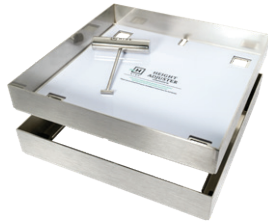
Skimmer Lids

PREMIUM 316L STAINLESS STEEL

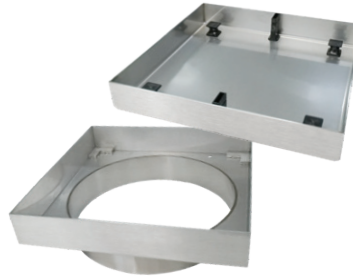
Insert thicknesses of 10, 15, 20, 30, 40, 50, and 60mm, with an option for 40mm concrete infill.



342mm



306mm



306mm Easy-Form Collar
Concrete

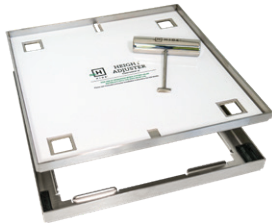


342mm & 306mm
Concrete

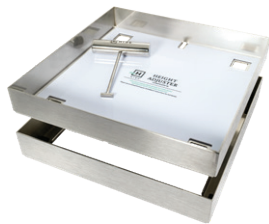
Access Covers

CONCRETE OR TILE INLAY

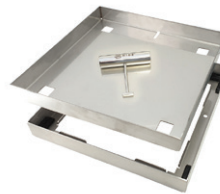
Insert thicknesses of 10, 15, 20, 30, 40, 50, and 60mm. 40mm concrete infill available for all sizes.



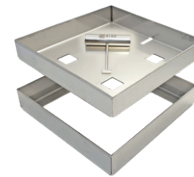
342mm



306mm



256mm



206mm



156mm

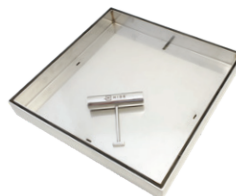
Extra Large Access Covers, available in 656mm and 506mm square sizes, are designed to fit tiles with a thickness of 20mm or 30mm.

Drain Covers

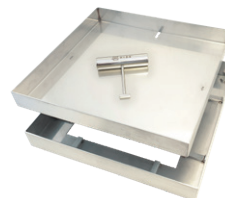
CONCRETE OR TILE INLAY



656mm Drain & Access Covers



342mm



314mm

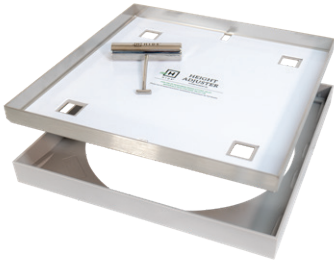


314mm (Concrete)

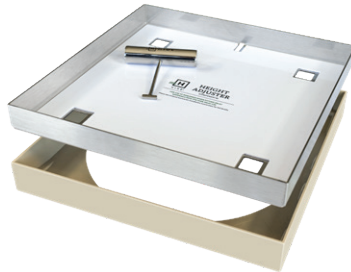
Skimmer Lids (Combination)

BOND-FREE POLYMER COMBINED WITH A STAINLESS STEEL COVERS

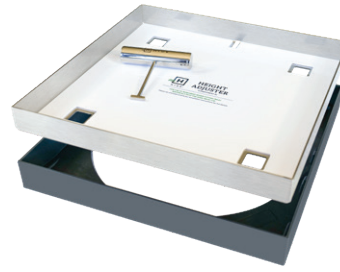
Insert thicknesses of 20, 30, & 40mm, with an option for 40mm concrete infill. No earthing required.



342mm (Ash)



342mm (Bone)



342mm (Charcoal)



342mm
Concrete Infill (Ash only)

Access Covers (Combination)

BOND-FREE POLYMER COMBINED WITH A STAINLESS STEEL COVERS

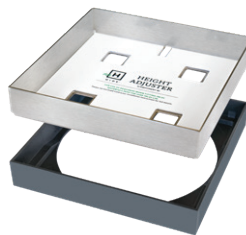
Insert thicknesses of 20, 30, & 40mm, with an option for 40mm concrete infill. No earthing required.



206mm (Ash)



206mm (Bone)



206mm (Charcoal)



206mm Concrete
Infill (Ash only)

Linear Drain Covers (Tile Insert)

1210mm MODULAR DRAIN COVERS

Insert thicknesses of 10, 20, 30, & 40mm

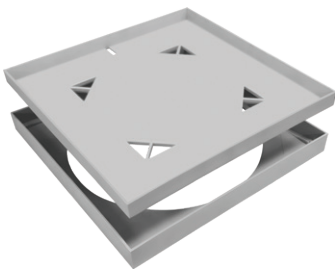
Compatible with Everhard & ReIn plastic channels
(not included)



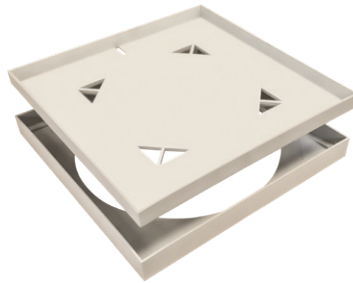
Skimmer Lids (Polymer)

BOND-FREE POLYMER KITS - ASH, BONE & CHARCOAL COLOURS

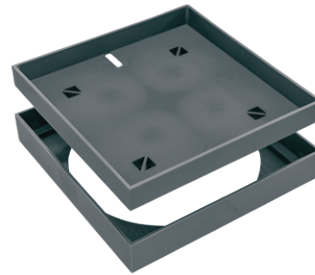
Insert thicknesses of 20 & 30mm. No earthing required.



342mm (Ash)



342mm (Bone)



342mm (Charcoal)

Access Covers (Polymer)

BOND-FREE POLYMER KITS - ASH, BONE & CHARCOAL COLOURS

Insert thicknesses of 20 & 30mm. No earthing required.



206mm (Ash)



206mm (Bone)



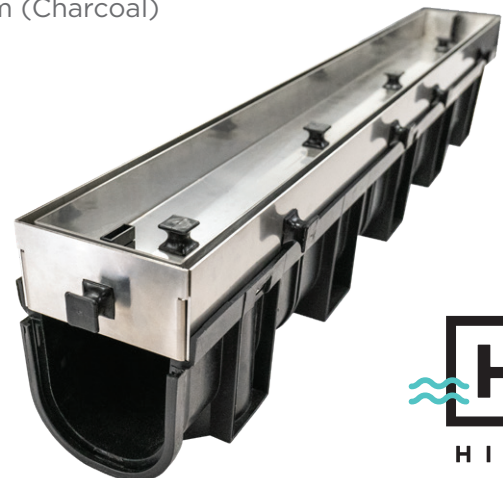
206mm (Charcoal)

Linear Drain Covers (Concrete Infill)

1000mm MODULAR DRAIN COVERS

Infill depth 40mm

Compatible with Everhard plastic channel
(not included)



SKIMMER LIDS

ACCESS COVERS

DRAIN COVERS

SKIMMER LIDS		Concrete Wet-Pour available							No Earthing (Bond-Free)				
ACCESS COVERS									Ash / Bone / Charcoal	Ash / Bone / Charcoal	Ash (Concrete or Paver)	Ash / Bone / Charcoal	Ash / Bone / Charcoal
DRAIN COVERS													
Material		Brushed Stainless Steel (SS) 316 Marine Grade							Stainless Steel / Polymer			Full Polymer	
Application	Size mm square	Inlay Depths mm											
		10	15	20	30	40	50	60	20	30	40	20	30
Skimmer	306	●		●	●	●	●	●					
	342	●	●	●	●	●	●	●	●	●	●	●	●
Access	156	●		●	●	●	●	●					
	206	●		●	●	●	●	●	●	●	●	●	●
	256	●		●	●	●	●	●					
	506			●	●								
	656			●	●								
Drain	314	●		●	●	●							
	342	●		●	●	●			●	●	●		
	656			●									
¹ Concrete Collar	240ø					●							
	270ø					●							
² Linear Drain Covers L x W													
Linear Cover ED	1000 x 125					●							
Linear Cover ED	1210 x 125	●		●	●	●							
Linear Cover SM	1210 x 110	●		●	●								

¹**Concrete Collar** - 240mmø and 270mmø easy form collar fits into standard Skimmer Boxes.

²**Linear Drain Covers** (Drain channel not supplied)
ED - Everhard Channel - 125mm wide
SM - Reln Storm Drain and Storm Mate Channels - 110mm wide

Product Range



SAFE. SEAMLESS. STUNNING.
— **LEARN MORE** —

SKIMMERLIDS.COM.AU | (07) 3807 2551