

NORTH AMERICAN
Product Range



Exterior Covers

Cubiertas exteriores

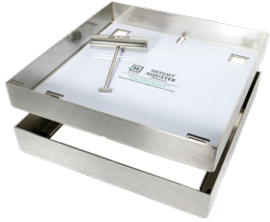


AMERICA DEL NORTE
Gama de productos

Skimmer Lids

PREMIUM 316L STAINLESS STEEL

Insert thicknesses of 0.4", 0.8", 1.2", 1.6", 2.0" and 2.5".



12" (Tile)



12" (Concrete)

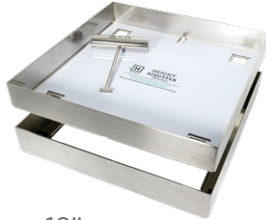
Access Covers

TILE INLAY OR CONCRETE INFILL

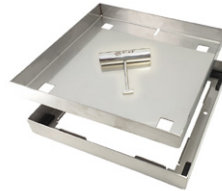
Insert thicknesses of 0.4", 0.8", 1.2", 1.6", 2.0" & 2.5", with an option for 1.6" concrete infill available.



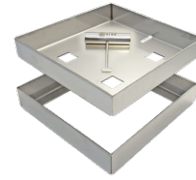
20" & 26"



12"



10"



8"



6"

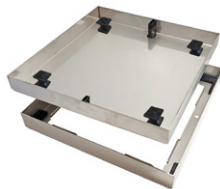
Concrete Skimmer & Access Covers

CONCRETE OR TILE INLAY

Add the supplied concrete conversion parts in all 1.6", 2.0" & 2.5" depth kits for wet-pour concrete applications.



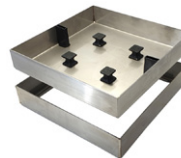
12"



10"



8"



6"

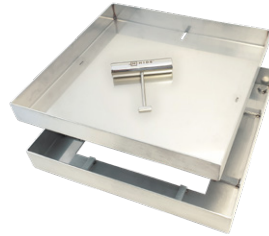
Drain Covers

TILE OR CONCRETE INLAY

Insert thicknesses of 0.4", 0.8", 1.2" & 1.6", with an option for 1.6" concrete infill available.



26"



12.5"



12.5" (Concrete)

SKIMMER LIDS

ACCESS COVERS

DRAIN COVERS

These depths are suitable for Concrete Wet-Pour

		Brushed Stainless Steel (SS) 316 Marine Grade					
Application	Size Inches square	Inlay Depths Inches					
		0.4	0.8	1.2	1.6	2.0	2.5
Skimmer	12"	●	●	●	●	●	●
Access	6"	●	●	●	●	●	●
	8"	●	●	●	●	●	●
	10"	●	●	●	●	●	●
	20"		●	●			
	26"		●	●			
Drain	12.5"	●	●	●	●		
	26"		●				

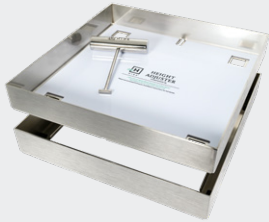
NORTH AMERICAN

Product Range

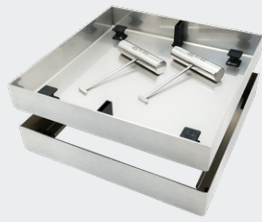
Tapas de Skimmer

ACERO INOXIDABLE 316L PREMIUM

Espesores de inserción de 0.4", 0.8", 1.2", 1.6", 2.0" y 2.5".



12" (Azulejo)



12" (Concreto)

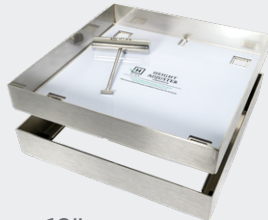
Cubiertas de Acceso

INSERCIÓN DE AZULEJO O RELLENO DE CONCRETO

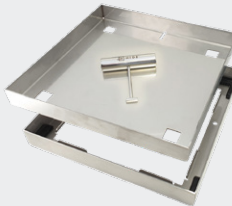
Espesores de inserción de 0.4", 0.8", 1.2", 1.6", 2.0" y 2.5", con una opción de relleno de concreto de 1.6" disponible.



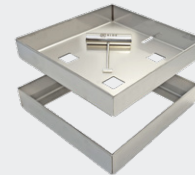
20" & 26"



12"



10"



8"

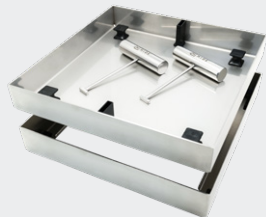


6"

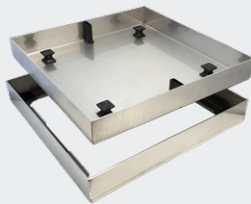
Cubiertas de Concreto para Skimmer y Acceso

INSERCIÓN DE CONCRETO O AZULEJO

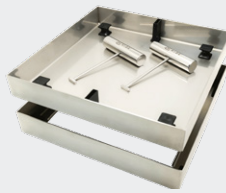
Agregue las piezas de conversión de concreto suministradas en todos los kits de profundidad de 1.6", 2.0" y 2.5" para aplicaciones de concreto vertido en húmedo.



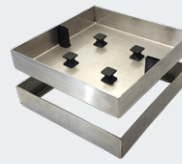
12"



10"



8"



6"

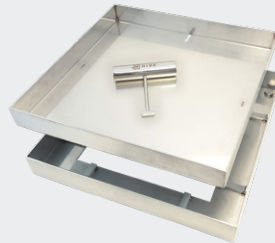
Cubiertas de Drenaje

INSERCIÓN DE AZULEJO O CONCRETO

Espesores de inserción de 0.4", 0.8", 1.2" y 1.6", con una opción de relleno de concreto de 1.6" disponible.



26"



12.5"



12.5" (Concreto)

TAPAS DE SKIMMER

CUBIERTAS DE ACCESO

CUBIERTAS DE DRENAJE

Vertido de Concreto
en Húmedo

Acero Inoxidable Cepillado (SS)
316 de Grado Marino

Aplicación	Tamaño en pulgadas cuadradas	Profundidades de Inserción en Pulgadas					
		0.4	0.8	1.2	1.6	2.0	2.5
Skimmer	12"	●	●	●	●	●	●
Acceso	6"	●	●	●	●	●	●
	8"	●	●	●	●	●	●
	10"	●	●	●	●	●	●
	20"		●	●			
	26"		●	●			
Drenaje	12.5"	●	●	●	●		
	26"		●				

América del Norte

Gama de Productos

SAFE. SEAMLESS. STUNNING.

— LEARN MORE —



SEGURO. SIN COSTURAS. IMPRESIONANTE.

— CONOCE MÁS —

